

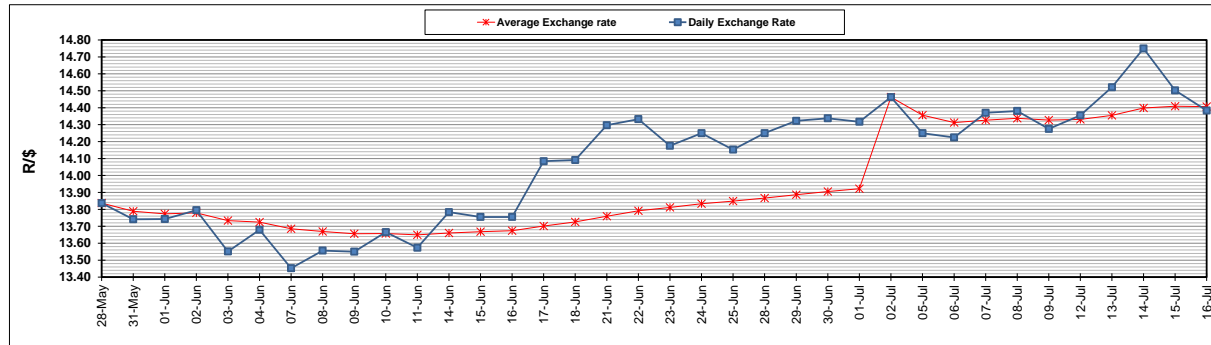
	PETROL 95 ULP	PETROL 93 ULP & LRP	DIESEL 0.05%	DIESEL 0.005%	ILL. PAR.
GAUTENG PUMP PRICE (SA c/l) AS FROM 07/07/2021	1,739.000	1,720.000	-	-	-
WHOLESALE PRICE (SA c/l) AS FROM 07/07/2021	-	-	1,508.620	1,512.020	913.488
SINGLE NATIONAL MAXIMUM RETAIL PRICE	-	-	-	-	1,150.000
BASIC FUEL PRICE - 16/07/2021 (SA c/l)	811.176	798.723	752.833	754.993	731.668
PRESS RELEASE CONTRIBUTION TO BFP 07/07/2021 - 16/07/2021 (SA c/l)	743.170	734.170	721.630	725.030	700.128
UNIT OVER/(UNDER) RECOVERY - 16/07/2021 (SA c/l)	(68.006)	(64.553)	(31.203)	(29.963)	(31.540)
AVERAGE BASIC FUEL PRICE 02/07/2021 - 16/07/2021	820.366	807.052	763.628	766.323	742.248
AVERAGE UNIT OVER/(UNDER) RECOVERY 02/07/2021 - 16/07/2021	(84.287)	(80.791)	(53.453)	(52.475)	(51.938)

### ANALYSIS MOVEMENT OF AVERAGE OVER/(UNDER) RECOVERY

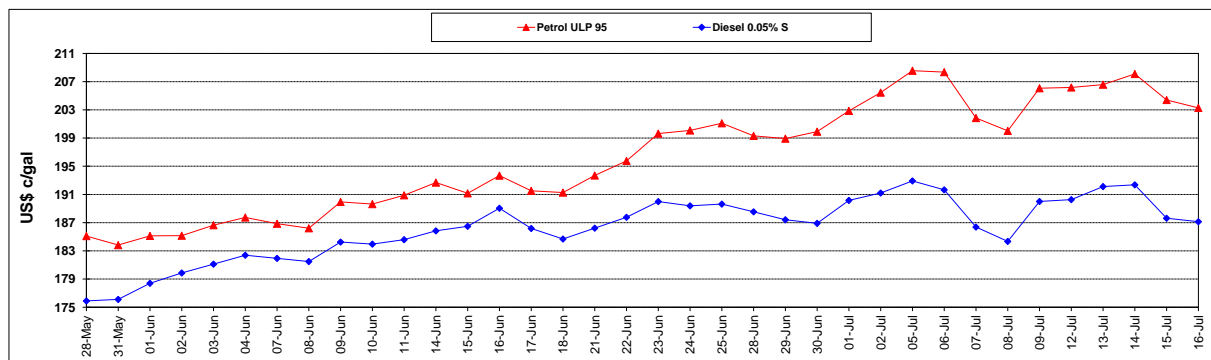
	PETROL 95	PETROL 93	DIESEL 0.05%	DIESEL 0.005%	ILL. PAR.
- MOVEMENT IN INTERNATIONAL PRODUCT PRICES	(56.681)	(53.633)	(27.756)	(26.687)	(26.961)
- MOVEMENT IN EXCHANGE RATE	(27.606)	(27.158)	(25.697)	(25.788)	(24.977)
AVERAGE UNIT OVER/(UNDER) RECOVERY 02/07/2021 - 16/07/2021	(84.287)	(80.791)	(53.453)	(52.475)	(51.938)

### R/\$ EXCHANGE RATE - (R/\$14.3835- 16/07/2021)

#### EXCHANGE RATE USED IN BASIC FUEL PRICE



#### INTERNATIONAL PRODUCT PRICES OF BASKET USED IN BASIC FUEL PRICE



#### BASIC FUEL PRICE IN SA CENTS PER LITRE

